

Test Report

Number: SZHH00764708

Applicant: SHENZHEN NEW DONG BO METAL PRODUCTS
NO.7, XINFENG ROAD, NIANFENG VILLAGE,
PINGDI TOWN, LONGGANG DISTRICT,
SHENZHEN CITY

Date: Feb 26, 2013

Attn: LIU YUAN JUN

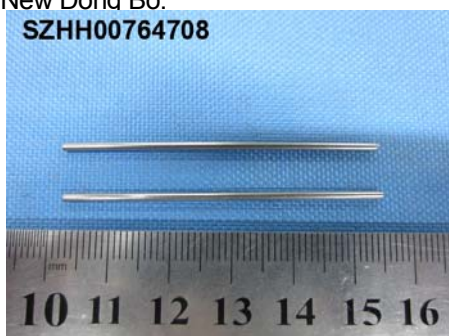
Sample Description:

One (1) submitted sample said to be **SUS304 wire.**

Heat No. **1203-764.**

Factory : New Dong Bo.

SZHH00764708



Tests conducted:

As requested by the applicant, for details refer to attached page(s)

Conclusion:

Tested Samples
Submitted sample

Standard
Mattel QSOP No. 0006-3600 Rev. Z clause 2.3.2.2 for
heavy elements Test

Result
Pass

This report is exclusive for Mattel program. Any other unauthorised usage of this report is strictly prohibited due to the grounds that the testing results are privileged and proprietary assets of Mattel.

Authorized by:
For Intertek Testing Services
Shenzhen Ltd.

Ben N.L. Lin
General Manager



Test Report

Number: SZHH00764708

Tests Conducted

1 Heavy Elements Analysis

As per Mattel Quality and Safety Operating Procedure No. 0006-3600 Rev. Z Clause 2.3.2.2, acid digestion and extraction methods were used and heavy elements content were determined by Inductively Coupled Argon Plasma Spectrometry.

Total Elements Content	Result (ppm)	Limit (ppm)	
		Tot.	Soluble Method 1
Tot. Barium (Ba)	<5	--	500
Tot. Lead (Pb)	<5	90	46
Tot. Cadmium (Cd)	<5	75	17
Tot. Antimony (Sb)	21	--	60
Tot. Selenium (Se)	<5	--	300
Tot. Chromium (Cr)	185000	--	60
Tot. Mercury (Hg)	<5	--	60
Tot. Arsenic (As)	<5	--	25
Tot. Aluminium (Al)	40	--	70000
Tot. Boron (B)	32	--	15000
Tot. Cobalt (Co)	938	--	130
Tot. Copper (Cu)	2900	--	7700
Tot. Manganese (Mn)	13800	--	15000
Tot. Nickel (Ni)	82300 Δ	10000	930
Tot. Strontium (Sr)	<10	--	56000
Tot. Tin (Sn)	80	--	180000
Tot. Zinc (Zn)	336	--	46000

Soluble Elements Content	Result (ppm) Soluble Method 1	Limit (ppm) Soluble Method 1	
Sol. Chromium (Cr)	<2.5		60
Sol. Cobalt (Co)	<2.5		130
Sol. Nickel (Ni)	<2.5		930

ppm = parts per million

Tot. = Total

Sol. = Soluble

Δ = According to the exemptions Clause 1.2.6 of QSOP 0006-3600 Revision Z, stainless steel is exempt from the total Nickel requirement.

Tested sample : Silver color metal.

Date sample received : Feb 21, 2013

Testing period : Feb 21, 2013 to Feb 25, 2013

End of report

This report is made solely on the basis of your instructions and/or information and materials supplied by you. It is not intended to be a recommendation for any particular course of action. Intertek does not accept a duty of care or any other responsibility to any person other than the Client in respect of this report and only accepts liability to the Client insofar as is expressly contained in the terms and conditions governing Intertek's provision of services to you. Intertek makes no warranties or representations either express or implied with respect to this report save as provided for in those terms and conditions. We have aimed to conduct the Review on a diligent and careful basis and we do not accept any liability to you for any loss arising out of or in connection with this report, in contract, tort, by statute or otherwise, except in the event of our gross negligence or wilful misconduct.

