



**Test Report**

Number: SZHH0076495903

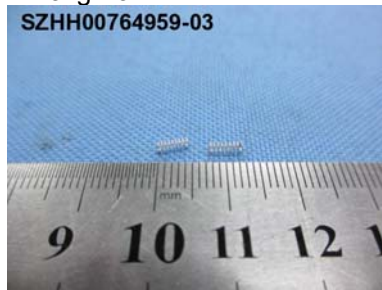
Applicant: SHENZHEN NEW DONG BO METAL PRODUCTS  
NO.7, XINFENG ROAD, NIANFENG VILLAGE,  
PINGDI TOWN, LONGGANG DISTRICT,  
SHENZHEN CITY

Date: Feb 28, 2013

Attn: LIU YUAN JUN

**Sample Description:**

One (1) submitted sample said to be :  
**Bright silver color metal spring (SWC+Silver).**  
Heat No.: S172011498.  
Lot No.: 20130218B01-01.  
Factory : New Dong Bo.



**Tests conducted:**

As requested by the applicant, refer to attached page(s) for details.

**Conclusion:**

<u>Tested Samples</u>	<u>Standard</u>	<u>Result</u>
Submitted sample	Restriction of the use of certain hazardous substance in electrical and electronic equipment (RoHS Directive 2011/65/EU)	Pass

Authorized by:  
For Intertek Testing Services  
Shenzhen Ltd.

Ben N.L. Lin  
General Manager



**Test Report**

Number: SZHH0076495903

## Tests Conducted

## RoHS Chemical Test

## (A) Test Result Summary:

Testing Item	Result
Cadmium (Cd) Content (mg/kg)	ND(<2)
Lead (Pb) Content (mg/kg)	ND(<2)
Mercury (Hg) Content (mg/kg)	ND(<2)
Chromium (VI)(Cr <sup>6+</sup> ) Result (By Boiling Water Extraction on Metal)(mg/kg with 50cm <sup>2</sup> )	Negative (<0.02)

Chemist: Wang Haijun

mg/kg with 50cm<sup>2</sup> = milligram per kilogram with 50 square centimetre

ND = Not detected

Positive = A positive test result indicated the presence of Cr(VI) at the time of testing, equal to or greater than threshold of 1 mg/kg for spot test procedure or 0.02 mg/kg for boiling-water-extraction procedures with a sample surface area of 50cm<sup>2</sup> used. However, it shall not be interpreted as the Cr(VI) concentration in the coating layer of the sample and should not be used as a method detection limit for this qualitative test.

Negative = A negative test result indicated above positive observation was not found at the time of testing. When the spot-test showed a negative result, the boiling-water-extraction procedure shall be used to verify the result.

## (B) RoHS Requirement:

Restricted Substances	Limits
Cadmium (Cd)	0.01% (100 mg/kg)
Lead (Pb)	0.1% (1000 mg/kg)
Mercury (Hg)	0.1% (1000 mg/kg)
Chromium (VI) (Cr <sup>6+</sup> )	0.1% (1000 mg/kg)

The above limits were quoted from 2011/65/EU for homogeneous material.

\*\*\*\*\*



# Test Report

Number: SZHH0076495903

## Tests Conducted

### (C) Test Method:

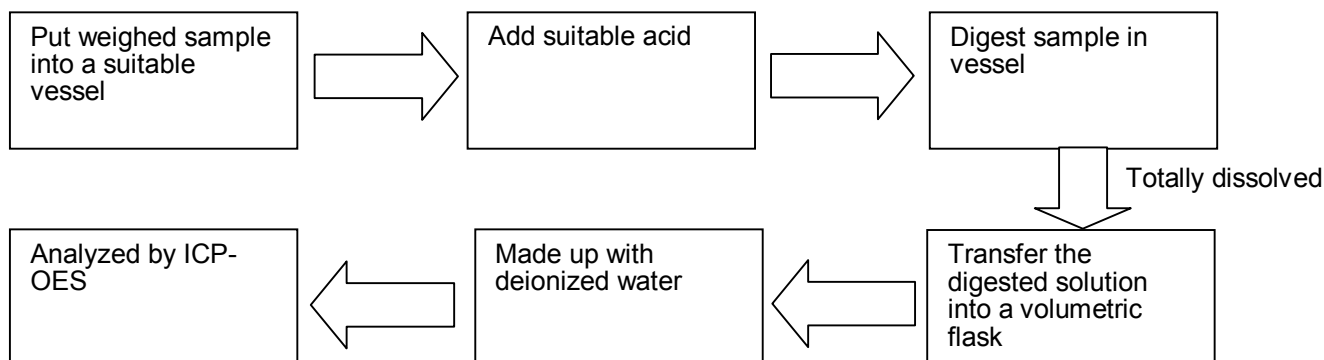
Testing Item	Testing Method	Reporting Limit
Cadmium (Cd) Content	With reference to IEC 62321 Edition 1.0:2008, by acid digestion and determined by ICP - OES	2 mg/kg
Lead (Pb) Content	With reference to IEC 62321 Edition 1.0:2008, by acid digestion and determined by ICP - OES	2 mg/kg
Mercury (Hg) Content	With reference to IEC 62321 Edition 1.0:2008, by acid digestion and determined by ICP - OES	2 mg/kg
Chromium (VI) (Cr <sup>6+</sup> ) Content	With reference to IEC 62321 Edition 1.0:2008, by boiling water extraction and determined by UV-VIS Spectrophotometer	Positive/Negative (Threshold of 0.02mg/kg with 50cm <sup>2</sup> )

Date sample received : Feb 25, 2013

Testing period : Feb 25, 2013 to Feb 28, 2013

### (D) Measurement Flowchart:

#### 1. Test for Cd/Pb Contents

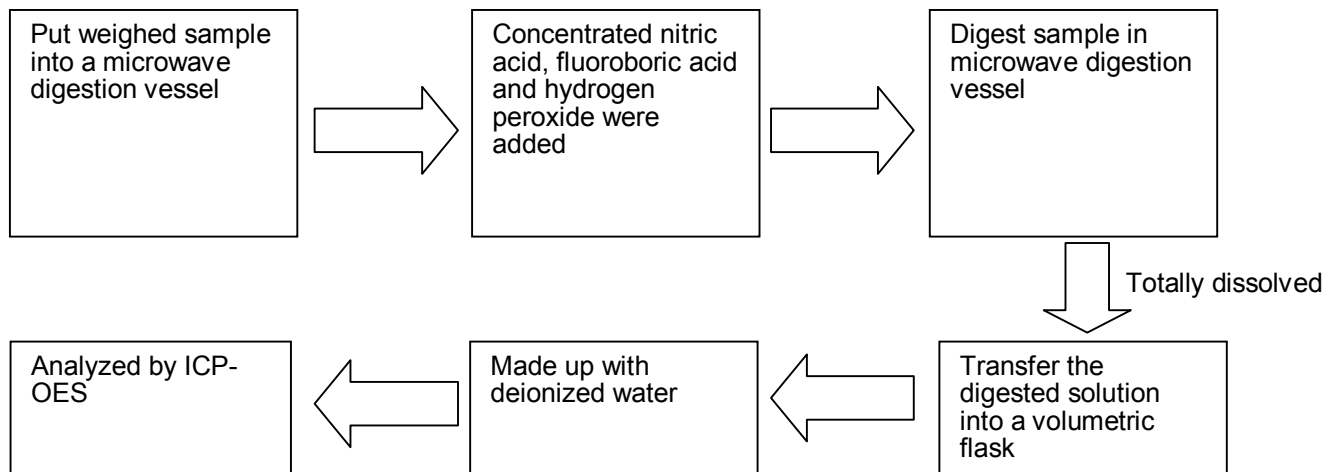


\*\*\*\*\*

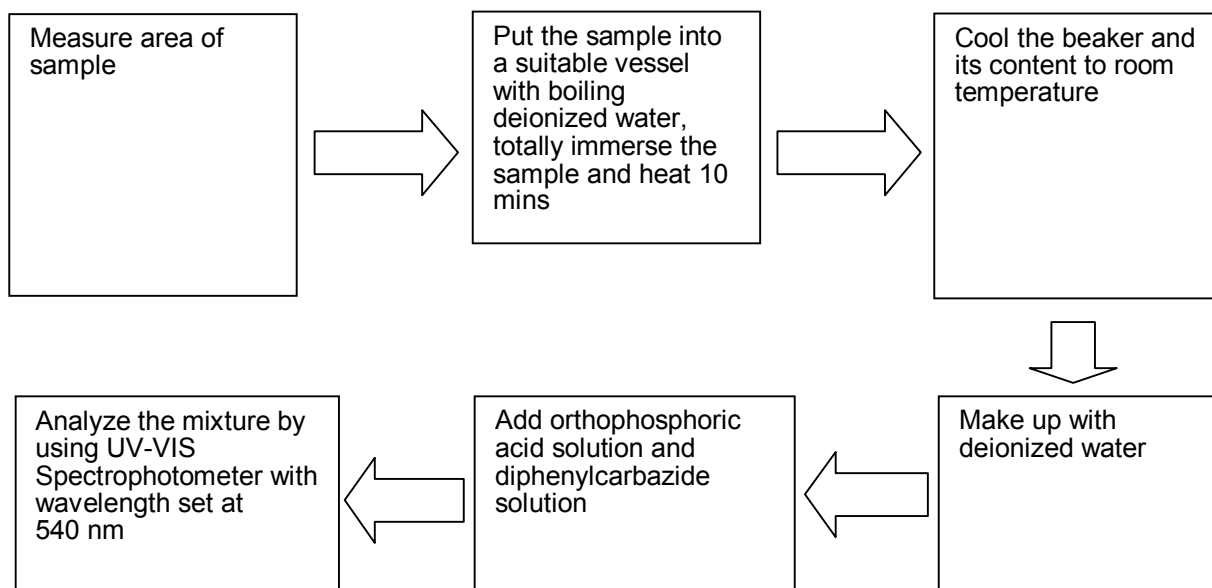


Tests Conducted

2. Test for Hg Content



3. Test for Chromium (VI) (Cr<sup>6+</sup>) Content (Boiling Water Extraction)



\*\*\*\*\*  
End of report

*This report is made solely on the basis of your instructions and/or information and materials supplied by you. It is not intended to be a recommendation for any particular course of action. Intertek does not accept a duty of care or any other responsibility to any person other than the Client in respect of this report and only accepts liability to the Client insofar as is expressly contained in the terms and conditions governing Intertek's provision of services to you. Intertek makes no warranties or representations either express or implied with respect to this report save as provided for in those terms and conditions. We have aimed to conduct the Review on a diligent and careful basis and we do not accept any liability to you for any loss arising out of or in connection with this report, in contract, tort, by statute or otherwise, except in the event of our gross negligence or wilful misconduct.*

